

# CPCCWHS1001

## Prepare to work safely in the construction industry

### UNIT INFORMATION

This unit of competency specifies the mandatory work health and safety training required prior to undertaking construction work. The unit requires the person to demonstrate personal awareness and knowledge of health and safety legislative requirements in order to work safely and prevent injury or harm to self and others. It covers identifying and orally reporting common construction hazards, understanding basic risk control measures, and identifying procedures for responding to potential incidents and emergencies. It also covers correctly selecting and fitting common personal protective equipment (PPE) used for construction work.

This unit meets the general construction induction training requirements of:

- Part 1.1 Definitions and Part 6.5 of the Model Work Health and Safety Regulations;
- Division 11 of Part 3 of the Occupational Safety and Health Regulations 1996 for Western Australia; and
- Division 3 of Part 5.1 of the Occupational Health and Safety Regulations 2007 for Victoria.

It is expected that site-specific induction training will be conducted prior to conducting construction work.

#### DURATION

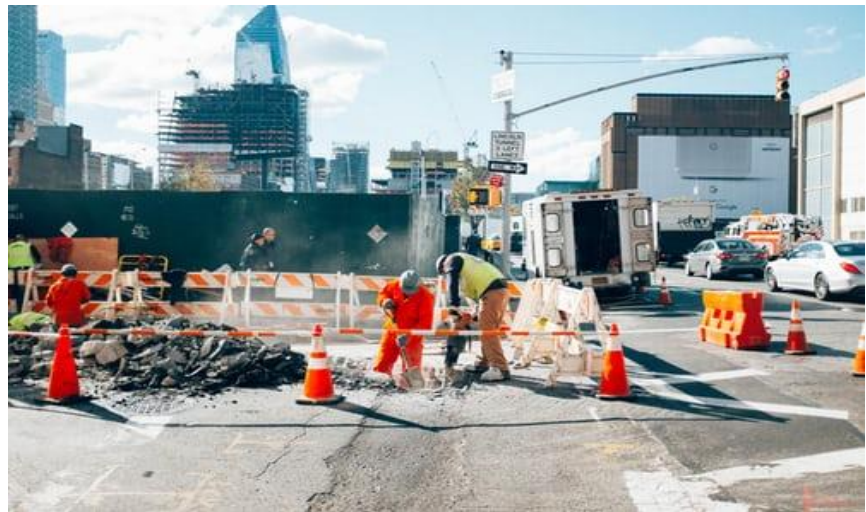
Duration of up to 1 day.

#### LOCATION

Delivered in NT only or workplace based across NT.

#### TUITION FEES

Information about fees and charges will be discussed prior to enrolment with you and/or the third party (such as employer) and agreed prior to commencement of the program.



### Unit Outline

This unit of competency is a prerequisite for obtaining a White Card. A White Card is mandatory for anyone who works or wants to work in the construction industry.

The unit of competency CPCCWHS1001 Prepare to work safely in the construction industry will be delivered as a stand-alone unit which is part of the (CPC) Construction, Plumbing and Services Training package. The unit of competency contains (IMPORTANT) assessment conditions that ECB have met in order to carry out the training and assessment for the unit of competency.

#### These being:

*The following must be present and available to learners during assessment activities:*

- equipment:
- all of the PPE listed in the performance evidence
- specifications:
- state or territory Act relevant to the location of the learner, as specified in the range of conditions.

*The assessment of performance evidence must be done by direct observation of the learner by an assessor, either by an assessor observing the learner physically and/or by an assessor observing the learner via audio and visual media in real time.*



### Entry Requirements

There are no prerequisite, entry, work-placement, licensing or certification requirements for this unit, however ECB recommends completion of Year 10 or equivalent as a guide to the level required. The entrants will need a level of language and literacy skills to enable them to complete the course, this LLN threshold test is embedded in the CPCWHS1001 Enrolment form that students are required to complete satisfactory.

### Enrolment Requirements

As this unit requires participants to apply and practice their new skills across an organisation, have access to different occupational groups and circumstances, and to base their assessment solutions in a workplace environment, it is strongly recommended that participants are employed or otherwise engaged in a workplace related role.

A USI is a 10-character string unique to students which is needed anytime students undertake nationally recognised training, such as applying into this program. Students can create a USI following the link on how to create a USI:  
<https://www.usi.gov.au/students/create-your-usi>.

**This unit is nationally recognised under the Australian Qualifications Framework (AQF).**

### Recognition of Prior Learning (RPL)

You may be eligible to apply for RPL/credit transfer if you have evidence of knowledge and skills achieved to meet the unit of competency (i.e Statement of Attainment).

Please make sure to provide the evidence to your assessor in order for us to provide you with a credit transfer for the unit of competency.

### Delivery Mode and Assessment

The unit of competency CPCWHS1001 Prepare to work safely in the construction industry will be delivered as face to face with theory questioning and practical assessment tasks.

All resources/materials will be provided on behalf of ECB Training Services in the attendance of your training.

### Licensing and Regulation

Licensing, legislative, regulatory or certification requirements apply to this unit. Relevant work health and safety state and territory regulatory authorities should be consulted to confirm jurisdictional requirements.



*Our Directors, our employees and contractors are encouraged to embrace the following core company values:*

**Integrity, Equality, Creativity, Trust, and Respect**